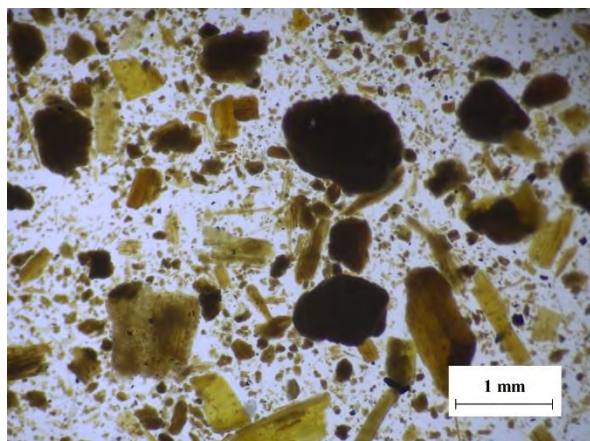
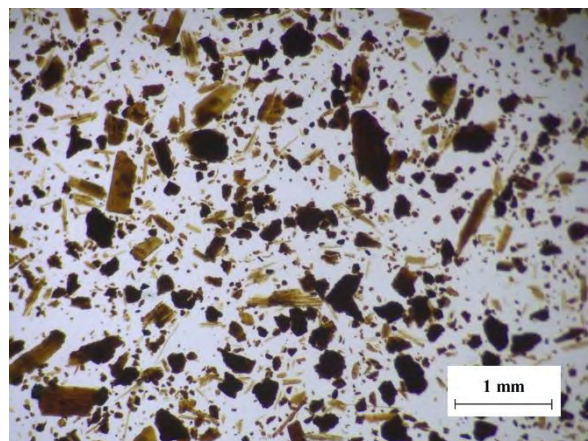


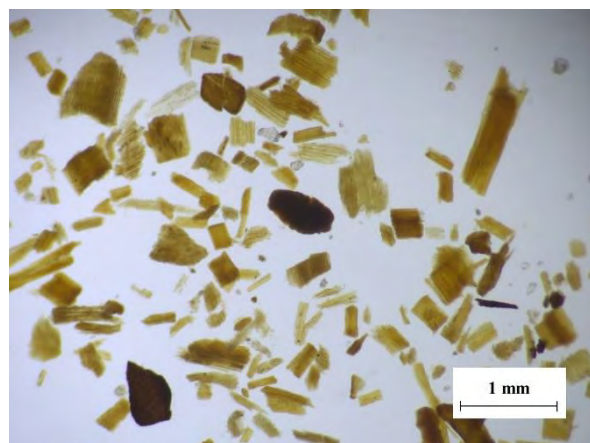
2.2.5 堆肥



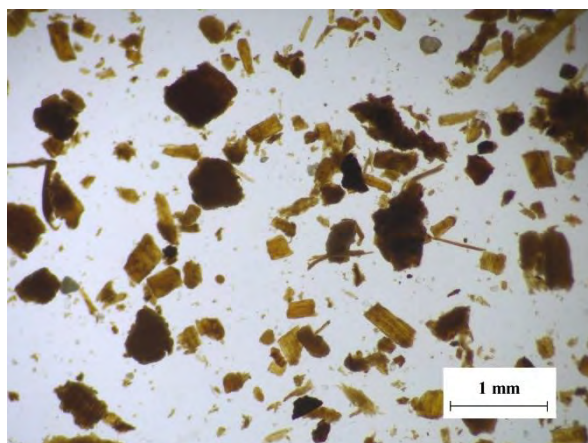
▲ 堆肥(1):牛ふん堆肥,
アルカリ処理, 実体顕微鏡(55倍)



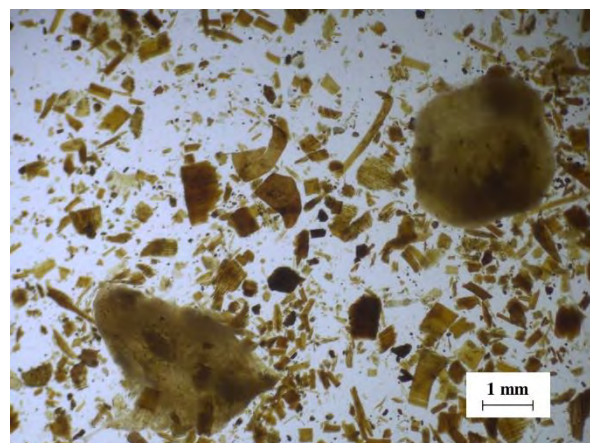
▲ 堆肥(1):牛ふん堆肥,
酸処理, 実体顕微鏡(55倍)



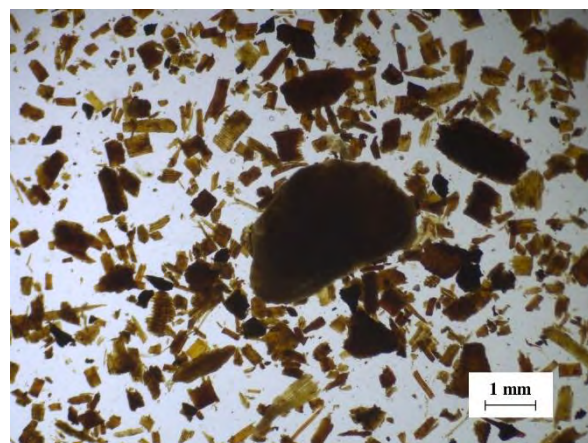
▲ 堆肥(2):牛ふん堆肥,
アルカリ処理, 実体顕微鏡(55倍)



▲ 堆肥(2):牛ふん堆肥,
酸処理, 実体顕微鏡(55倍)

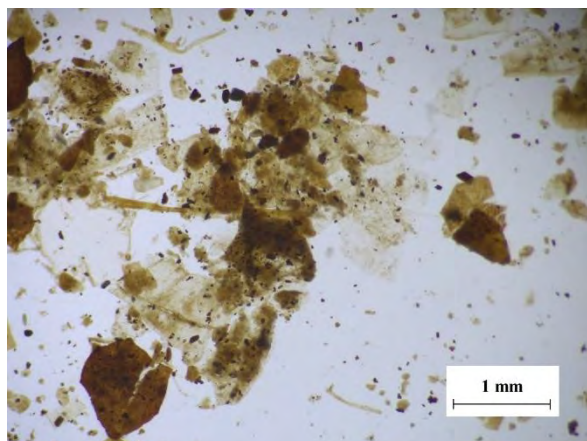


▲ 堆肥(3):豚ふん堆肥,
アルカリ処理, 実体顕微鏡(30倍)

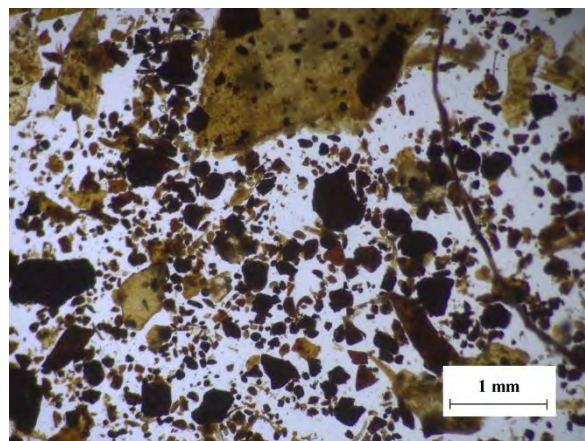


▲ 堆肥(3):豚ふん堆肥,
酸処理, 実体顕微鏡(30倍)

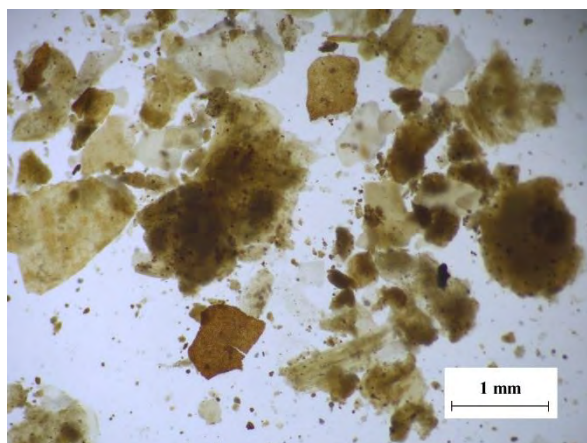
2.2.5 堆肥(続き)



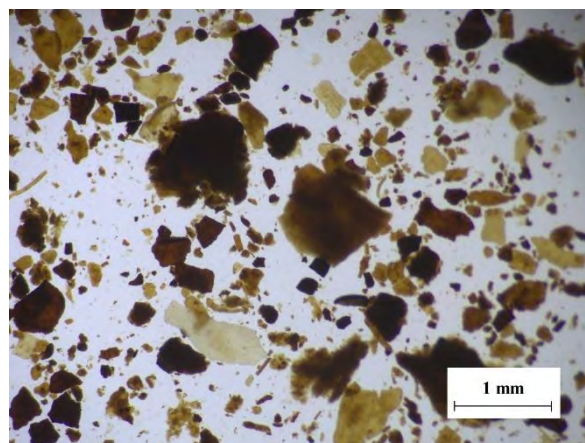
▲ 堆肥(4):豚ふん堆肥,
アルカリ処理, 実体顕微鏡(55倍)



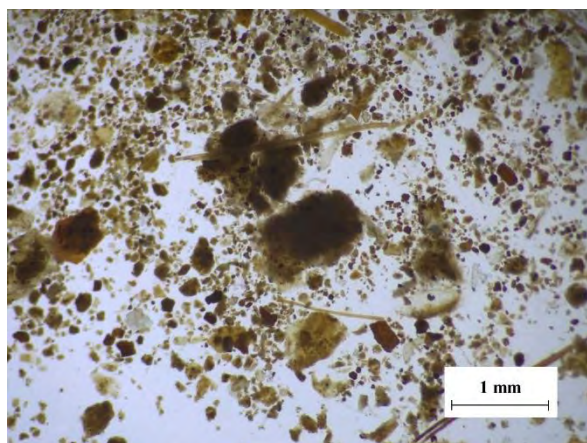
▲ 堆肥(4):豚ふん堆肥,
酸処理, 実体顕微鏡(55倍)



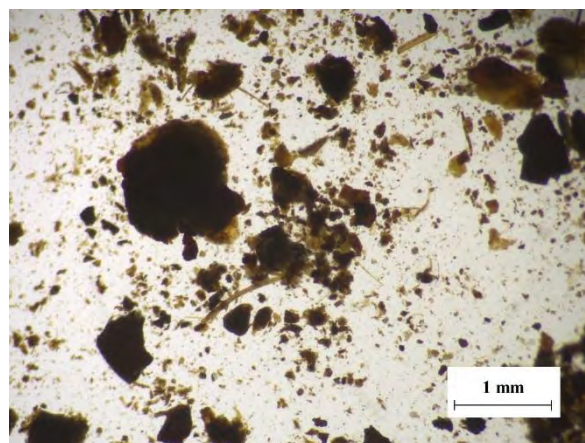
▲ 堆肥(5):鶏ふん堆肥,
アルカリ処理, 実体顕微鏡(55倍)



▲ 堆肥(5):鶏ふん堆肥,
酸処理, 実体顕微鏡(55倍)



▲ 堆肥(6):鶏ふん堆肥,
アルカリ処理, 実体顕微鏡(55倍)



▲ 堆肥(6):鶏ふん堆肥,
酸処理, 実体顕微鏡(55倍)